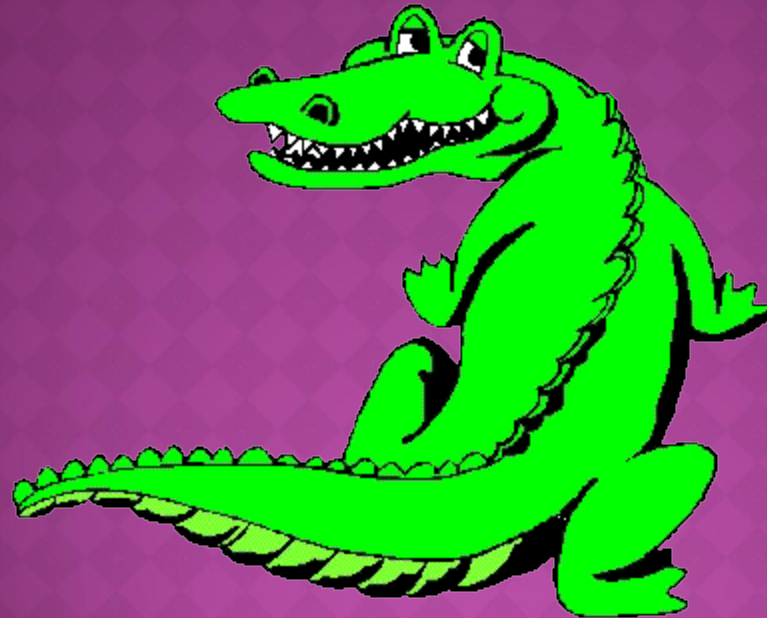


ANALYSIS OF THE AVAILABILITY OF HEALTHY FOOD OPTIONS FOR UF STUDENTS



Ashley
Beasley
Shiqing Lin
Nicoly Rocha
Kelsie Timpe

PROBLEM BACKGROUND

Food desert - a *low-income census tract* where a substantial number or share of residents have *low access* to a supermarket or large grocery store



Many UF students lack easy access to healthy food options, and thus end up eating *junk food*

FOCUS OF STUDY

- To find a **new location** to build a healthy food option for gators with limited access to existing healthy food options



HEALTHY FOOD DEFINED



- Must have fresh produce
- Must be open every day of the week
- Must have reasonable prices
- Must be available to every person and take SNAP cards
- This excludes: restaurants, vitamin stores, farmers markets and assisted food places
- Left with: **Grocery, natural and health food stores**

CRITERIA FOR SELECTION OF NEW LOCATION

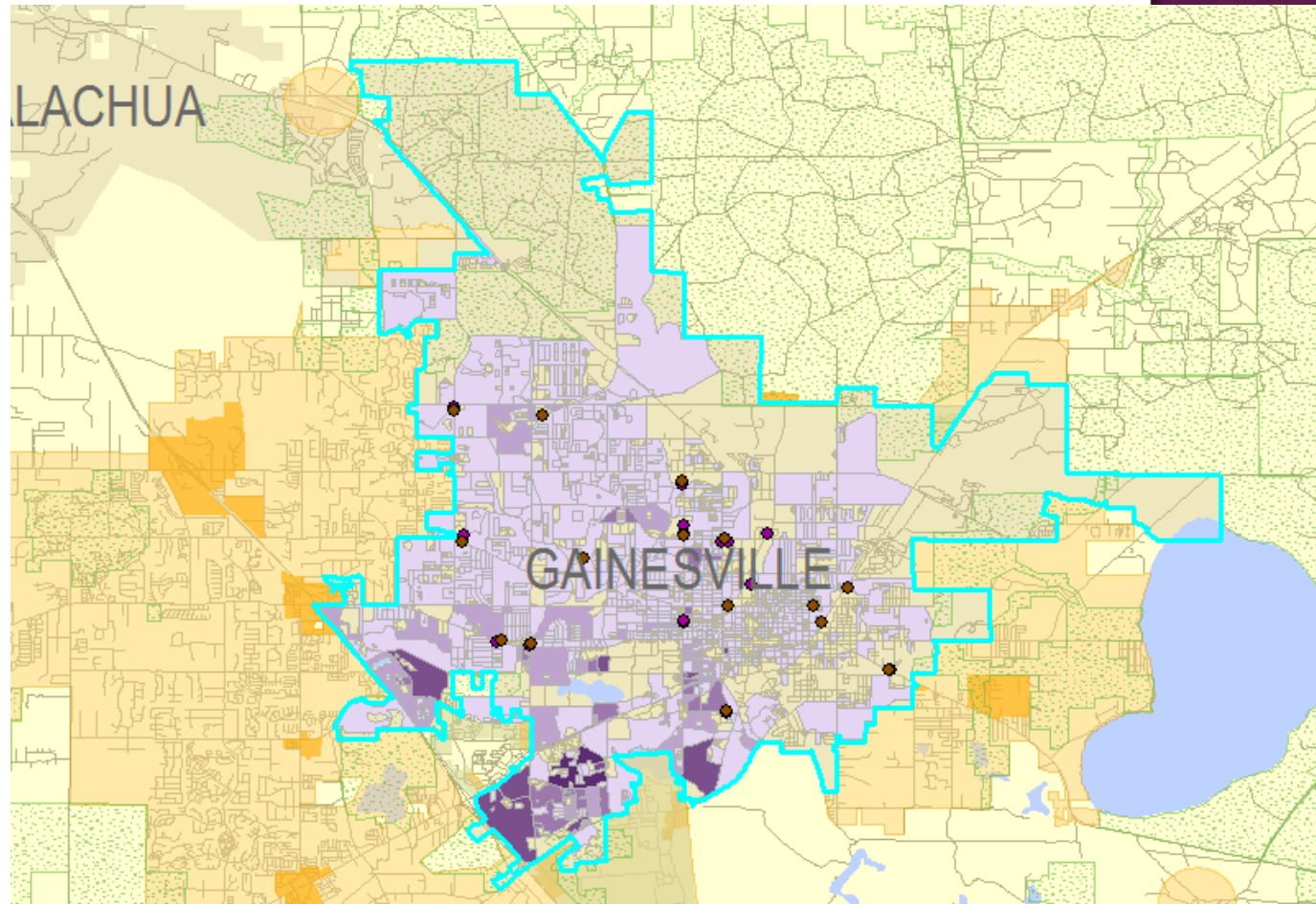
The parcel must be:

- ⦿ Available
- ⦿ Within a census block with a high concentration of students
- ⦿ Within 150 ft of a bus stop
- ⦿ At least 2 miles away from another store deemed a healthy food option
- ⦿ Not in a high or medium crime region

STEP 1

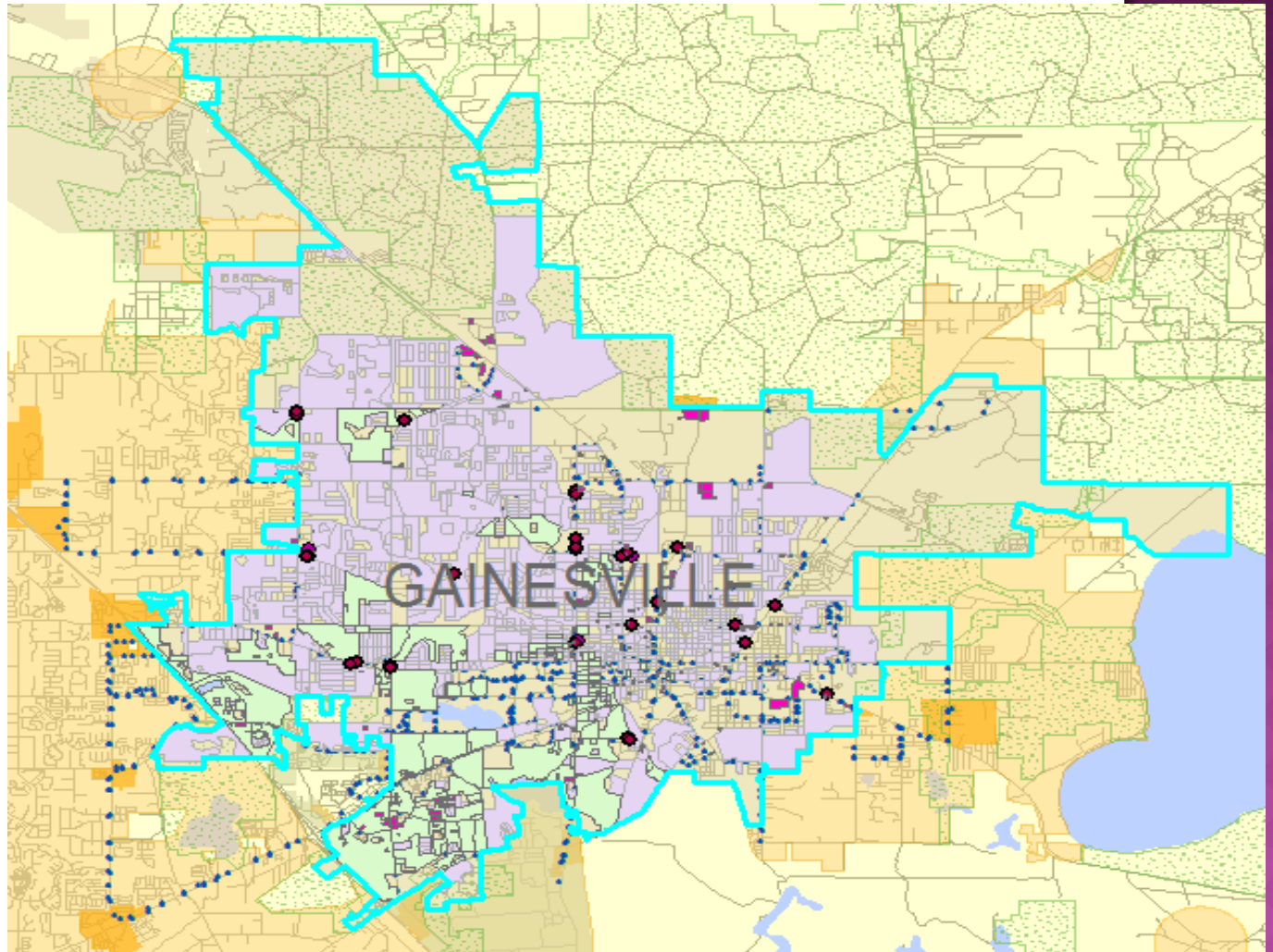
Existing Healthy Food Options and Student Population Density by Block in Gainesville

- Select by Attribute → Gainesville
- Intersect → Student population with block by GEOID
- Select by Attribute → Healthy food options



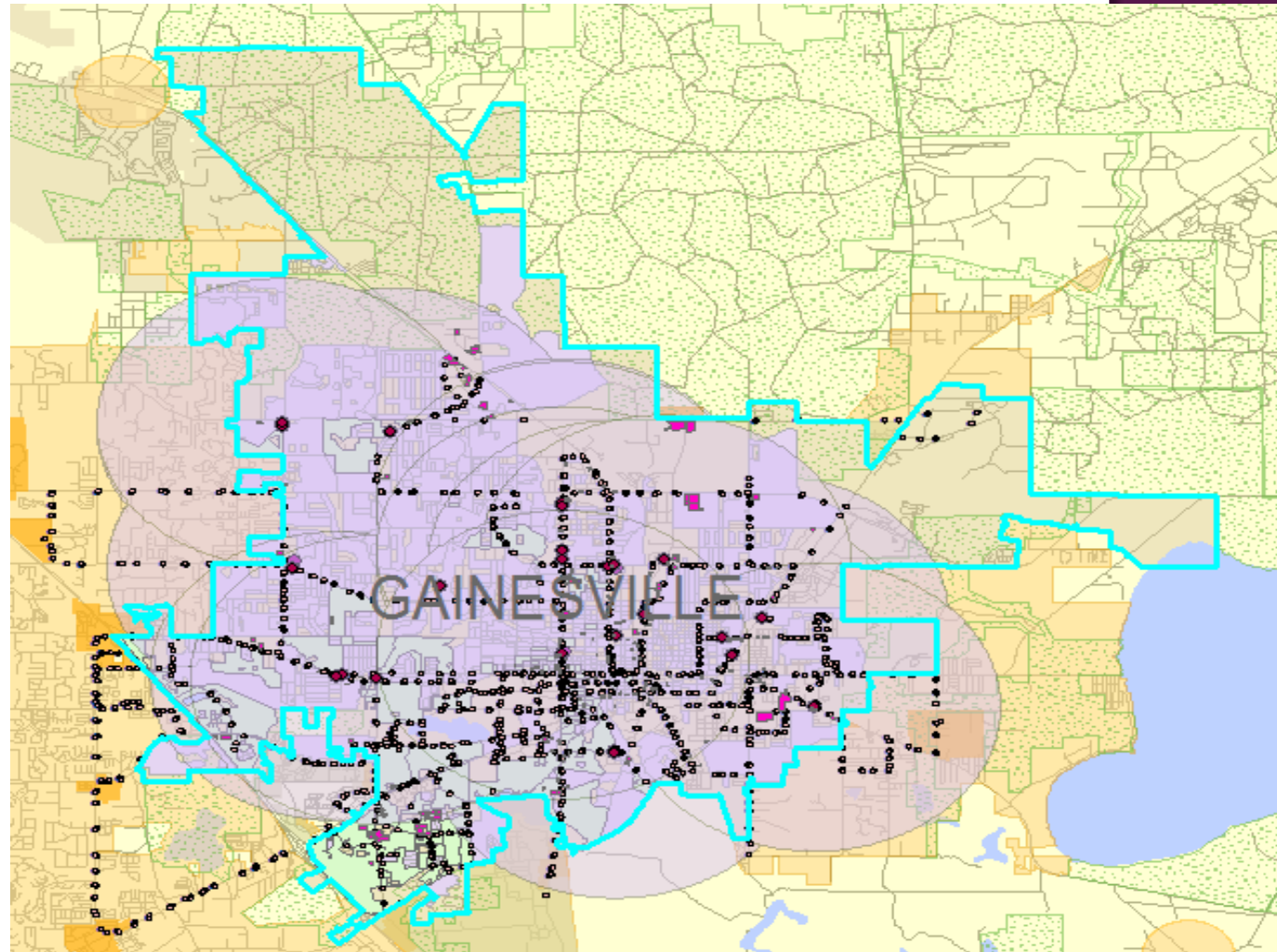
STEP 2

- ◉ Blocks with more than 25 students in Gainesville
 - Select by attribute →
GeoID count
 - Bus stops shown
- ◉ Undeveloped vacant commercial tax parcels in Gainesville
 - Select by attribute
pusecat and pusedev



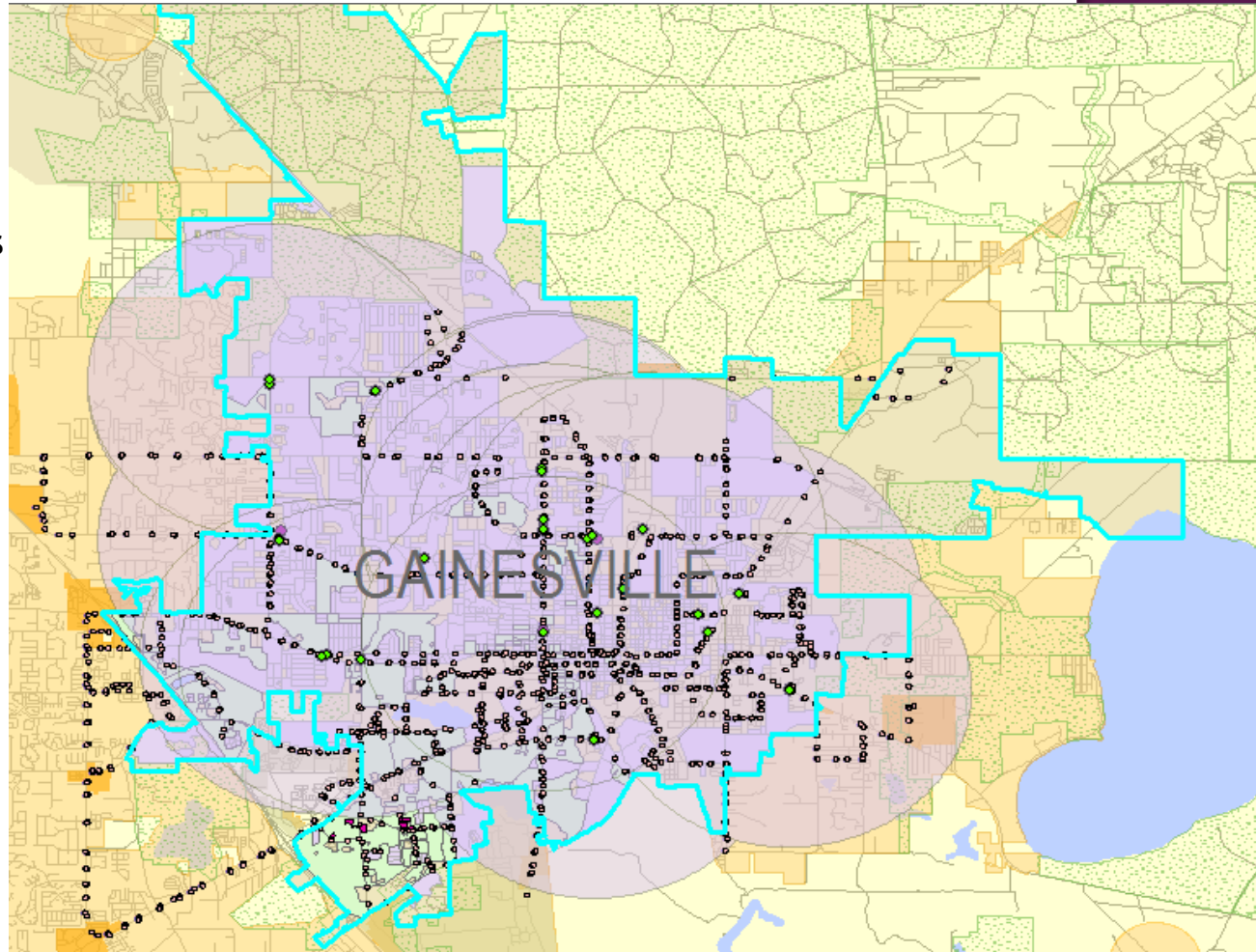
STEP 3

- Buffer the selected healthy food options by 2 miles
- Buffer the bus stops by 150 feet
 - ArcToolbox/Analysis Tools/Proximity/Buffer



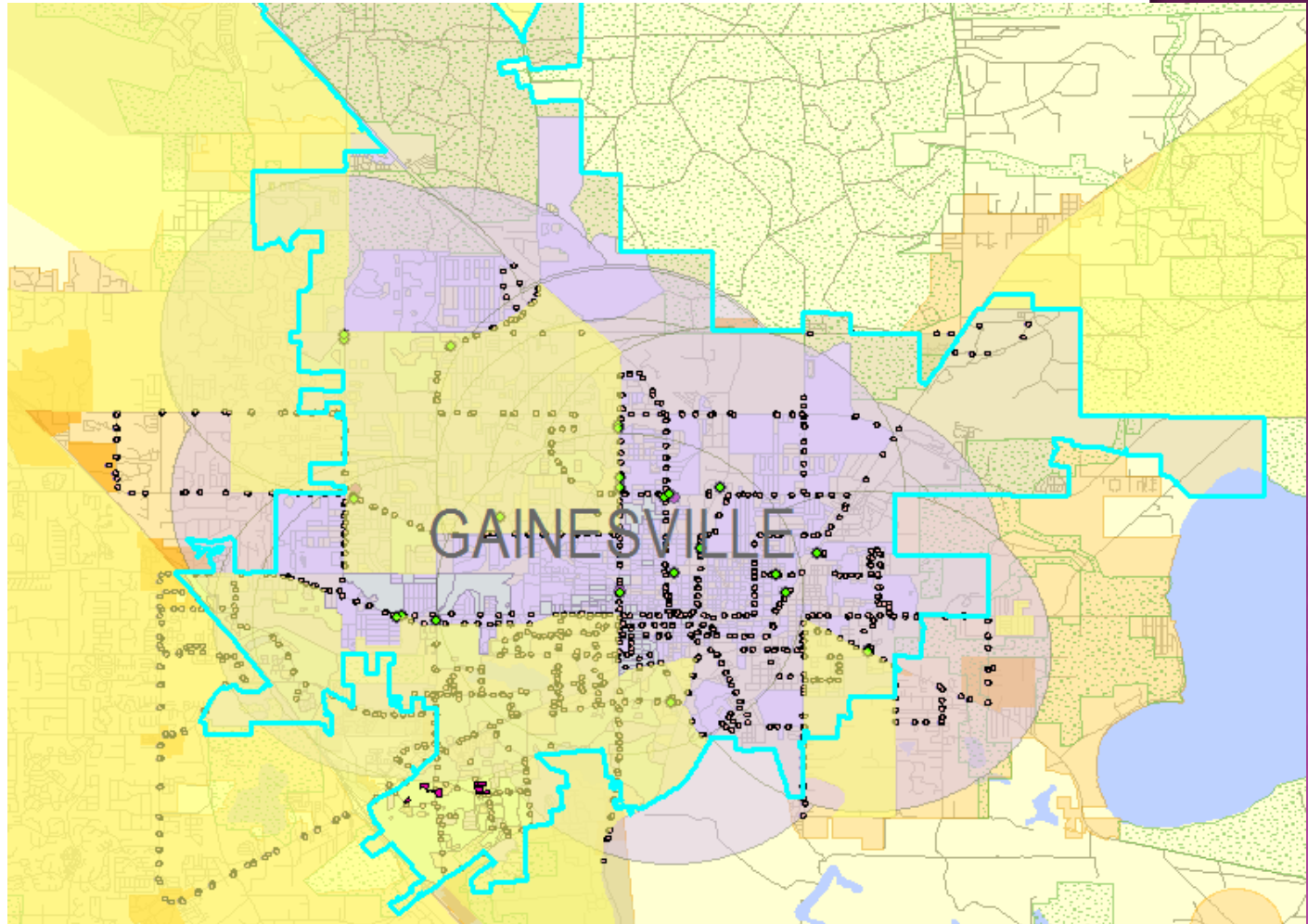
STEP 4

- Select the tax parcels that intersect the bus buffer of 150 ft
 - Select by location
 - Target layer→tax parcels
 - Source layer→bus stops buffer
- Remove the tax parcels that intersect with health food options buffer of 2 miles
 - Select by location→remove from selected feature
 - Target layer→selected tax parcels by bus buffer
 - Source layer→ health food options buffer



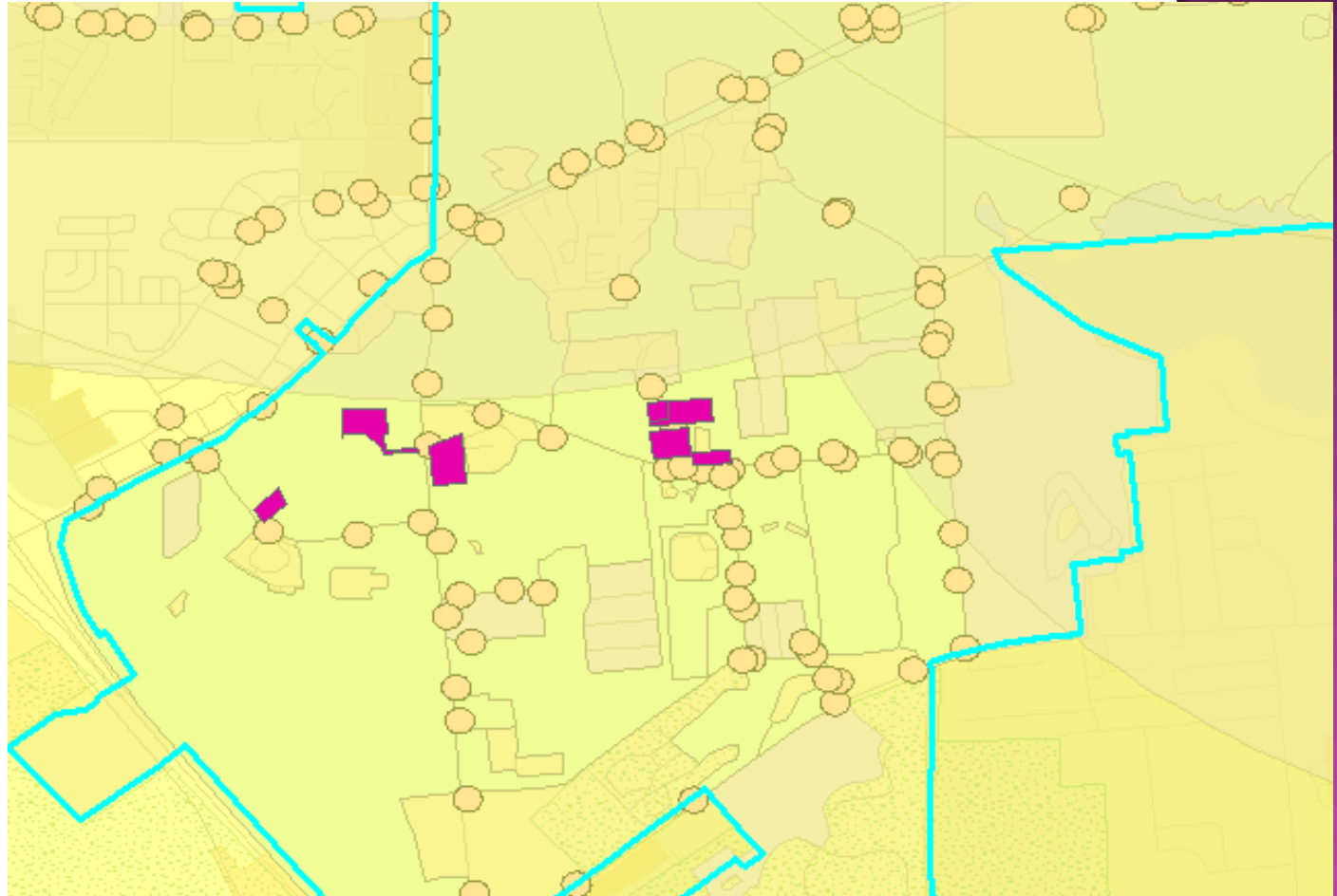
STEP 5

- Crime - low, lower, or lowest
 - Select by Attribute → crime rank

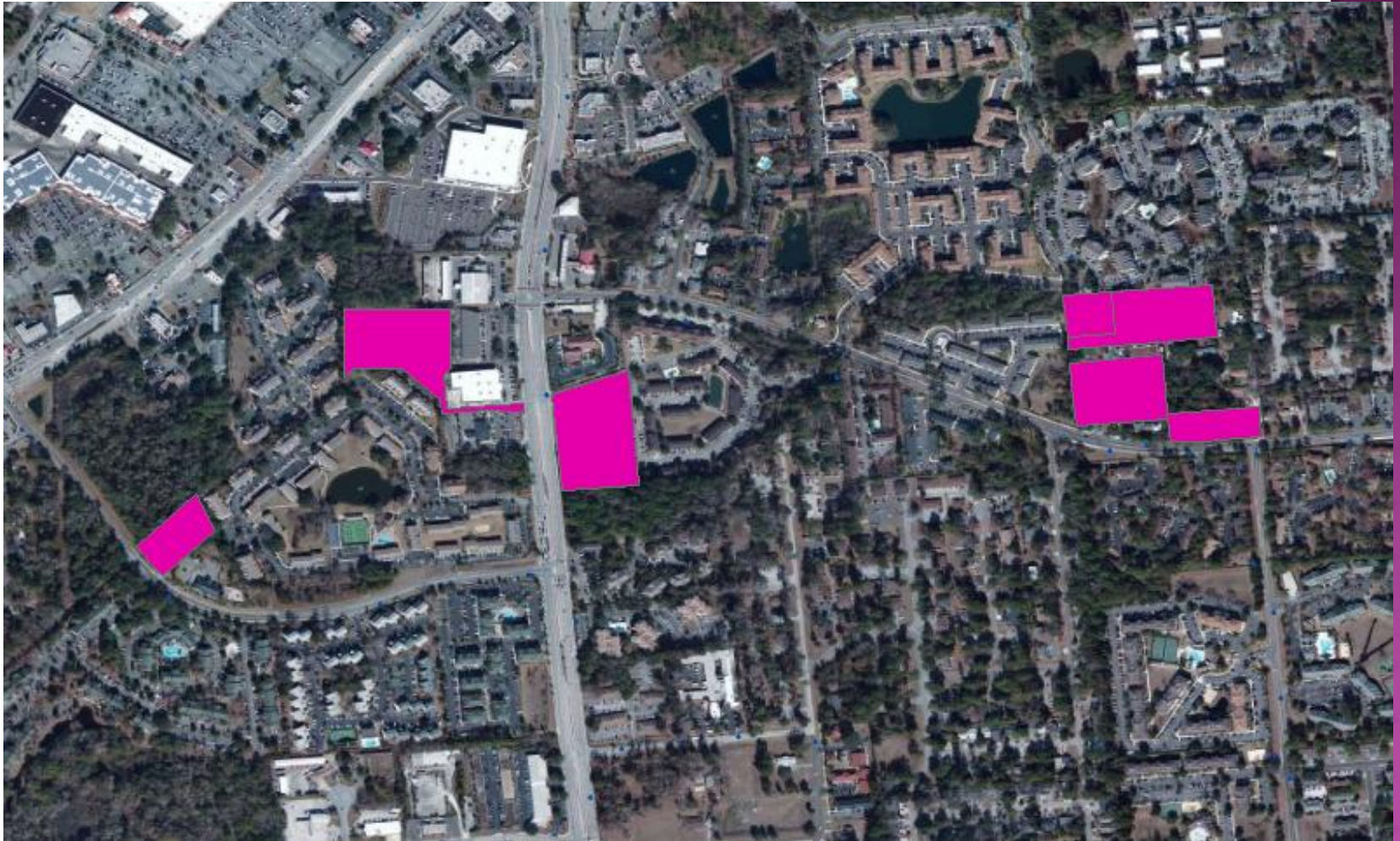


ANALYSIS OF AVAILABLE PARCELS

- Close up view of the 7 available parcels



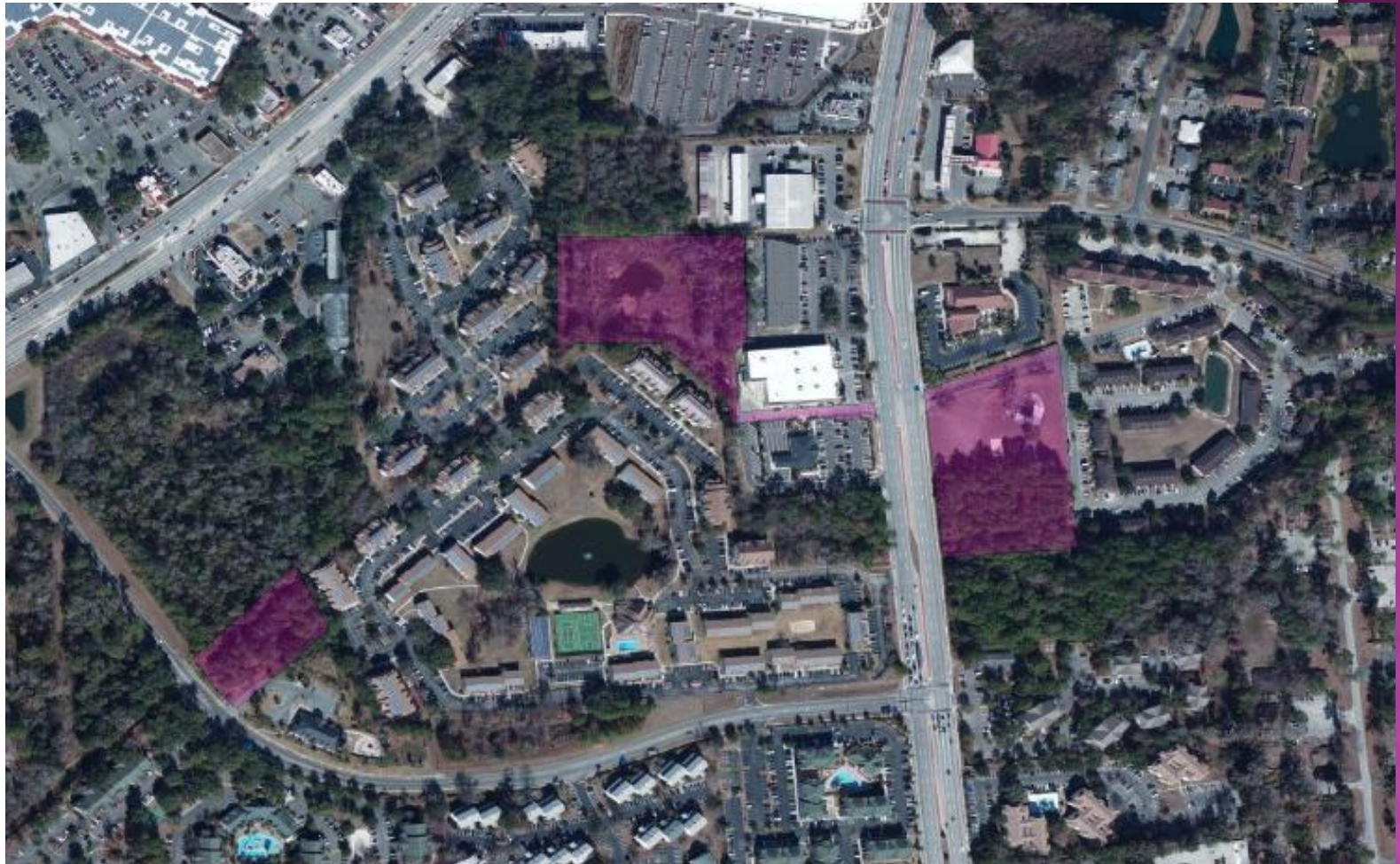
BING AERIAL



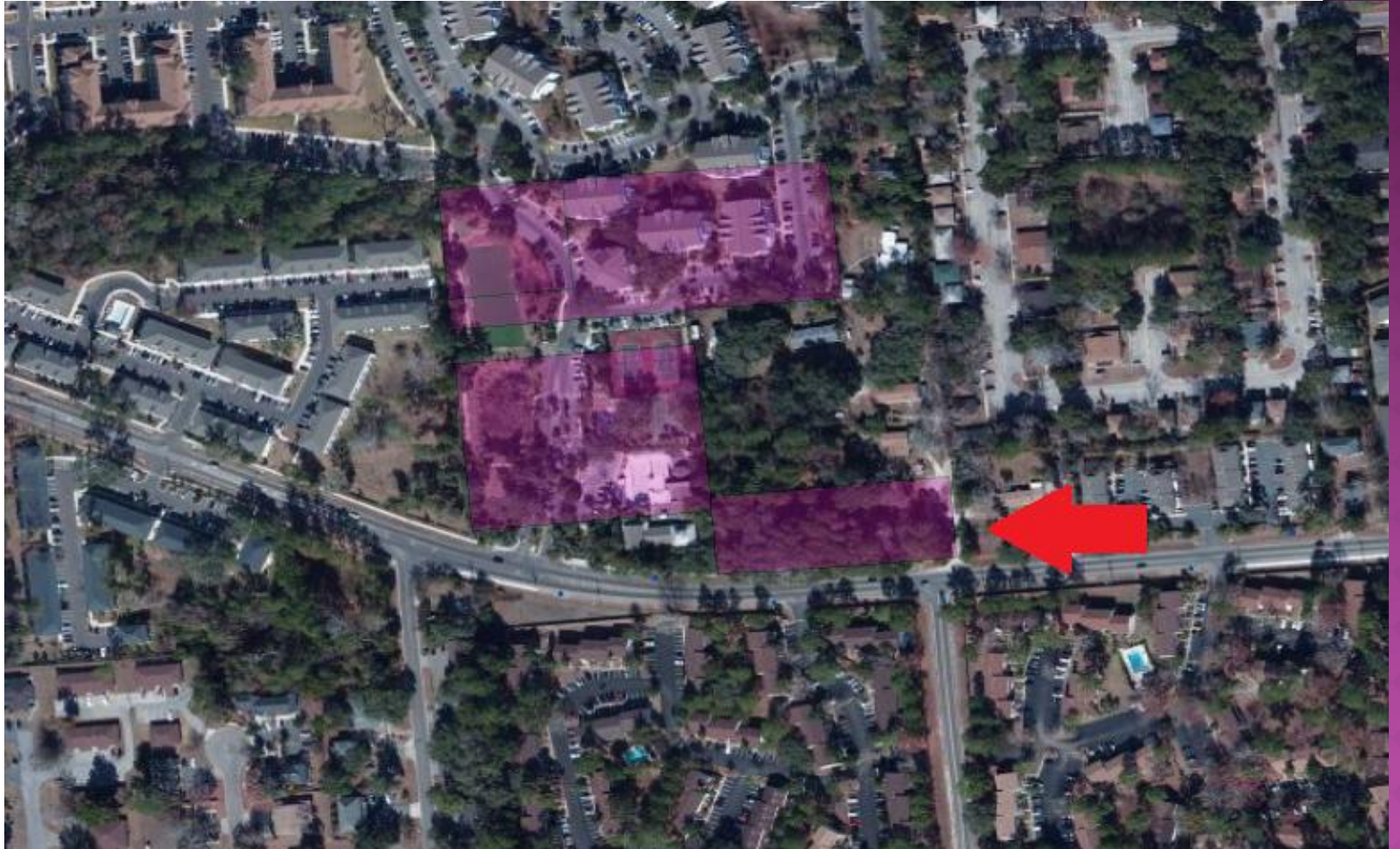
4 PARCELS ON SW 35TH PLACE



2 PARCELS ON 34TH ST, 1 ON SW
37TH BLVD.



BEST CHOICE!



CONCLUSION

- 3 selected locations for a new healthy food option
 - On 34th St.
 - On SW 37th Blvd.
 - On 35th Pl.
- All met our criteria
- **Best choice - undeveloped vacant commercial tax parcel on 35th Pl.**

DISCUSSION AND QUESTIONS

- ◉ Data for Gainesville doesn't include Butler Plaza
- ◉ Use of census blocks for population distribution is misleading
- ◉ Future land use did not have data within Gainesville

